

## Materials Needed – PLEASE WASH FABRIC BEFORE SEWING 😊

- Poly/Cotton blend fabric
- 2 – 16” pieces of twill tape, 3/8” grosgrain ribbon or 1/4” double-fold bias tape
- 2 – 12” pieces of twill tape, 3/8” grosgrain ribbon or 1/4” double-fold bias tape

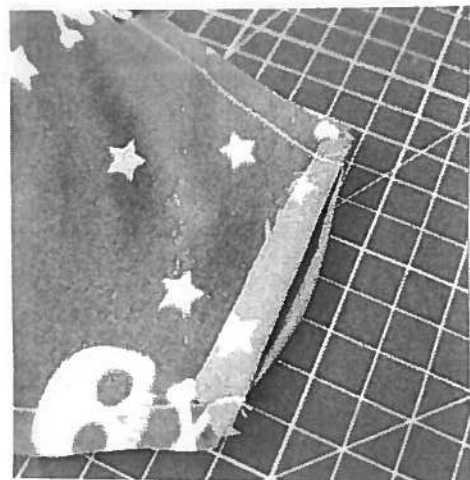
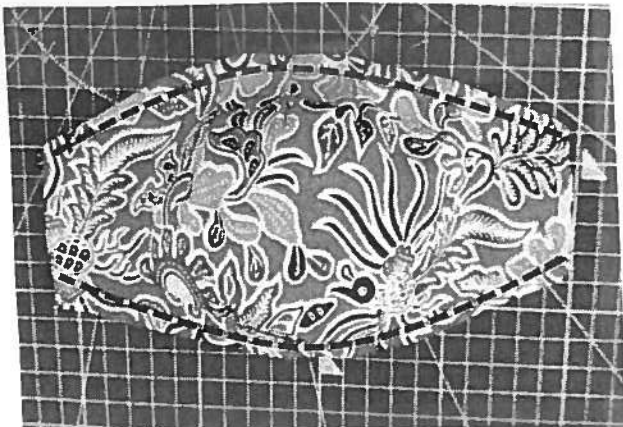
### Cutting Instruction:

- Cut 2 pieces of fabric same size

Seam allowance of 1/4” is already included in the pattern.

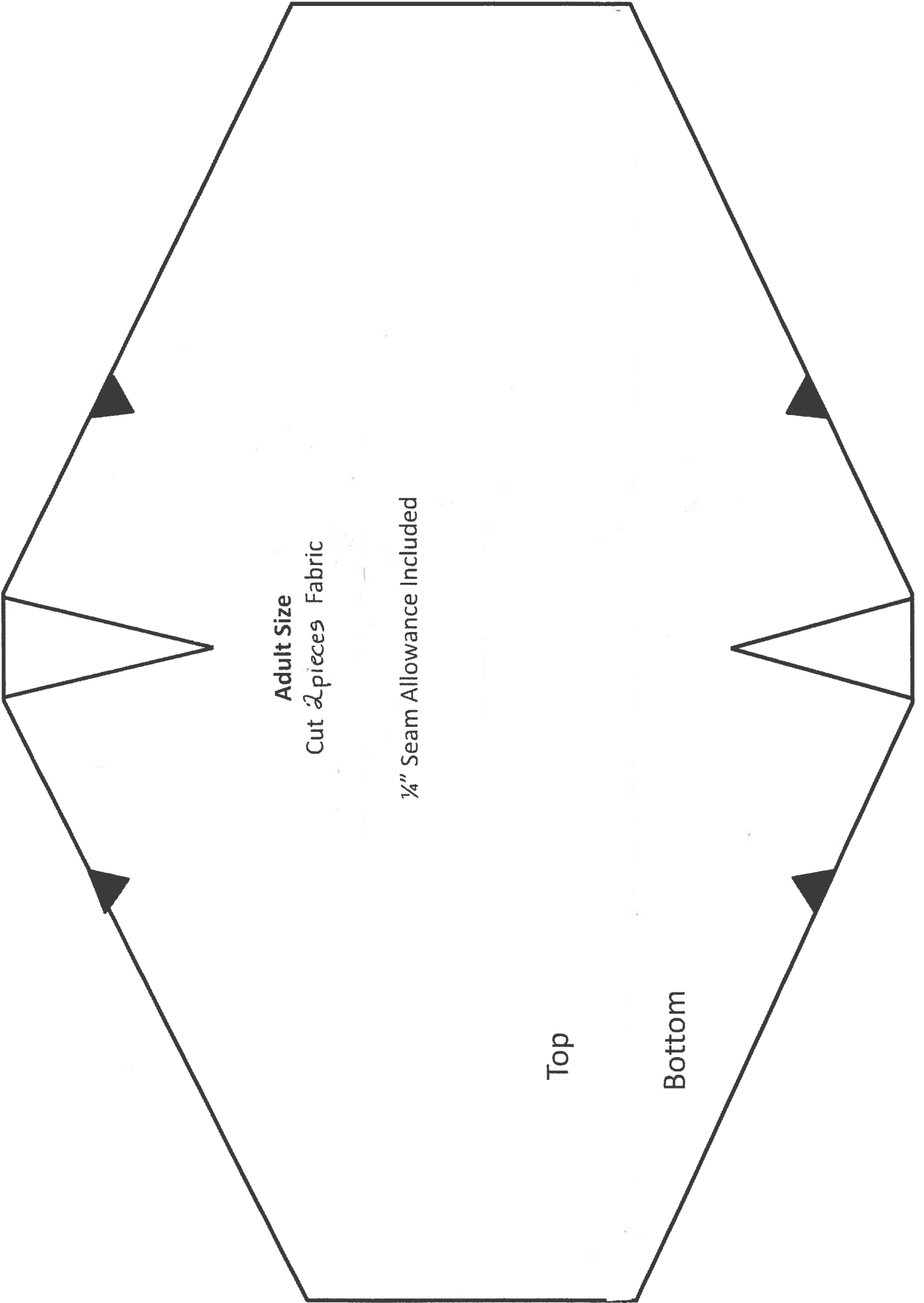
### PLEASE READ THE INSTRUCTIONS CAREFULLY BEFORE CUTTING THE FABRIC.

1. Cut the fabric pieces according to the directions given on the template. Cut the center darts and mark the notches.
2. Sew the darts by pressing the fabric right side together so that the dart ends are aligned and sew using 1/4” seam allowance. Make a slight pinch pleat at the marked notches so that the top edge is aligned, and sew down using 1/4” seam allowance for about 1”. Backstitch at the beginning and the end. Repeat with the bottom dart and pinch pleats at notches.
3. Pin the 2 fabric pieces with right sides together. Matching the darts and notches. The seams should face opposite size to minimize the bulk. On one of the short ends, fold seam by 1/4” towards the lining and pin in place. From this end, sew all the three sides with 1/4” seam allowance. Leave the folded side unstitched. Once done, make small clips around the edges at the top and bottom and clip the corners. Turn the mask inside out from the side opening, press the seam nicely, and top stitch all around.



4. If using  $\frac{3}{4}$ " or 1" twill tape --> Sew each cut piece of twill tape in half lengthwise. If using  $\frac{1}{2}$ ", no need to make it smaller. If using  $\frac{1}{4}$ " double fold bias tape, sew along the edge. No need to sew  $\frac{3}{8}$ " grosgrain ribbon.

Attach each 16" piece to the TOP of the mask and the 12" pieces to the BOTTOM of the mask. These are attached so that they are angling out from the corners.



Adult Size  
Cut 2 pieces Fabric

1/4" Seam Allowance Included

Top

Bottom